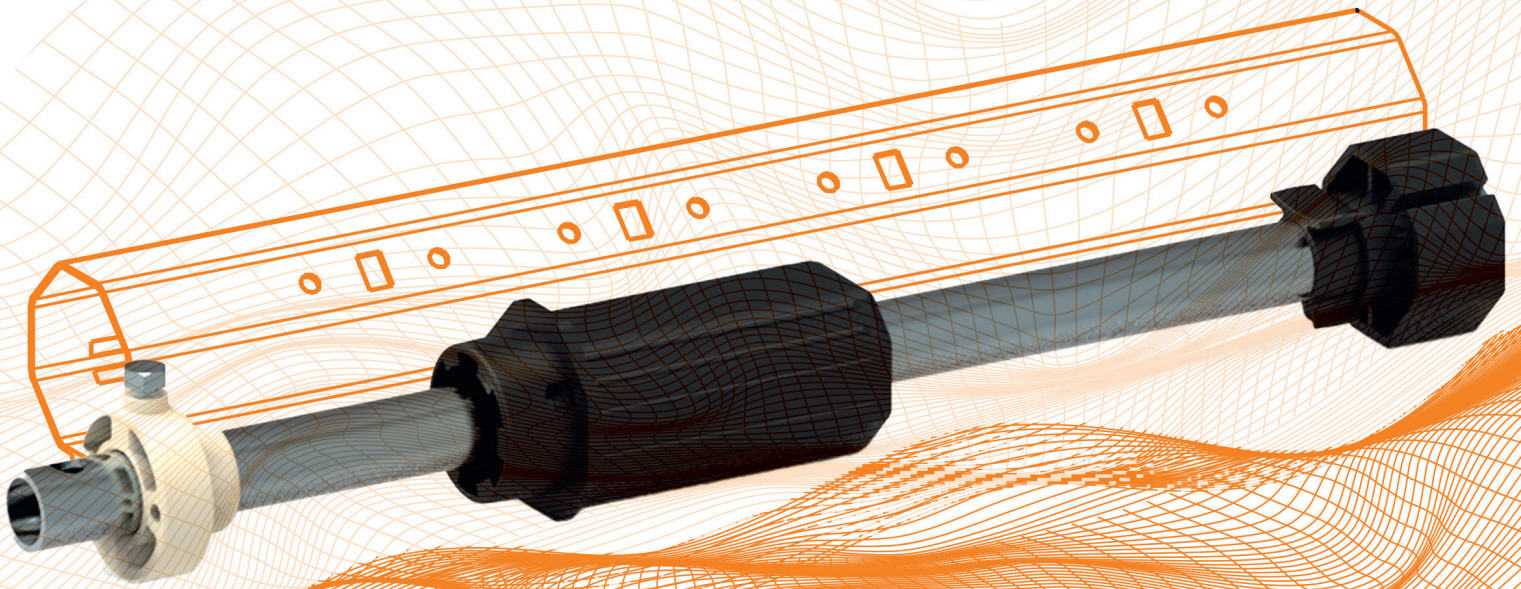




ZURFLÜH-FELLER

Caps & Dummy Ends for Octagonal Tubes



Retractable caps



Item no. A412D

Use with jaw coupling hubs, ball bearings dia. 28, clip-on backing plates and pulleys.

Weight capacity per retracted cap: 10 kg.



Item no. A483A

Mounted on ball bearings, bore dia. 18. Gear transmission by means of 10 mm square.

Weight capacity per retracted cap: 10 kg.

Short caps



Item no. A411

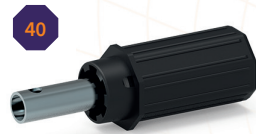
Mounted on ball bearings, bore dia. 18. Gear transmission by means of 8 mm square (version with 10 mm square available).

Weight capacity per cap: 8 kg.



Item no. A461

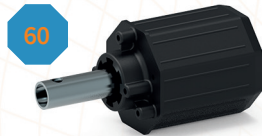
Caps with shaft



Item no. A403

Mounted with pin bracket. Gear transmission by means of jaw coupling hub.

Weight capacity per cap: 8 kg.



Item no. A454

Multipurpose dummy ends



Item no. A458

Mounted with pin bracket. Gear transmission by means of jaw coupling hub.

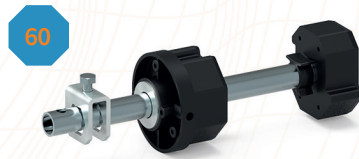
Weight capacity per dummy end: 20 kg.

Adjustable dummy ends



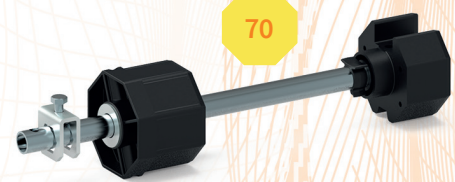
Item no. A402C

Mounted with pin bracket, used on side opposite gear, max. offset 130 mm. Weight capacity per dummy end: 17 kg.



Item no. A459

Mounted with pin bracket, used on side opposite gear, max. offset 90. Weight capacity per dummy end: 17 kg. Version available with max. offset 130 and weight capacity per dummy end: 20 kg.



Item no. A485B

Mounted with pin bracket, used on side opposite gear, max. offset 85 mm. Weight capacity per dummy end: 20 kg.

Retractable dummy ends



Item no. A484A

Used with jaw coupling hubs, dia. 28 ball bearings, clip-on backing plates and pulleys. Weight capacity per retracted dummy end: 20 kg.

